



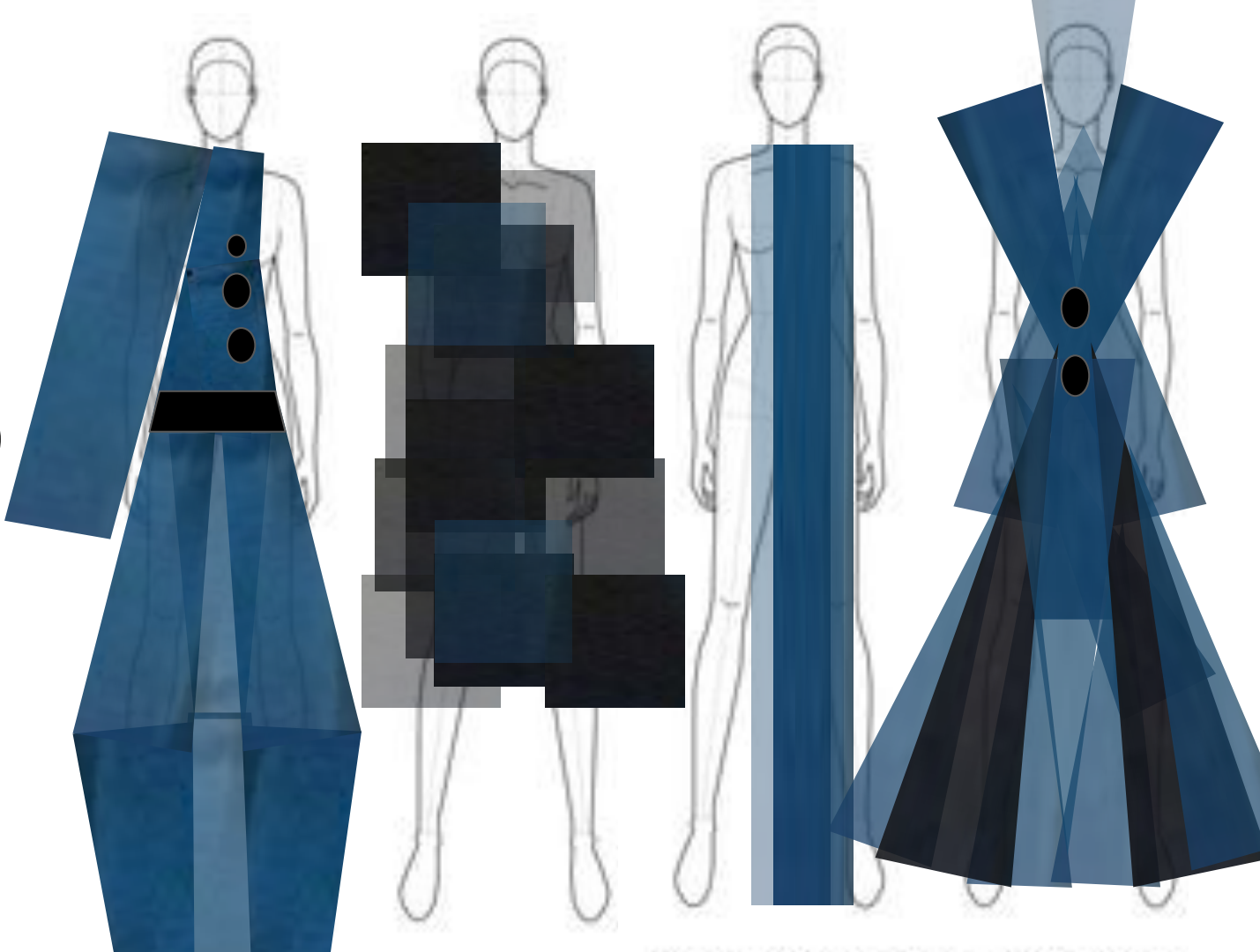
# Mood board



© BBC



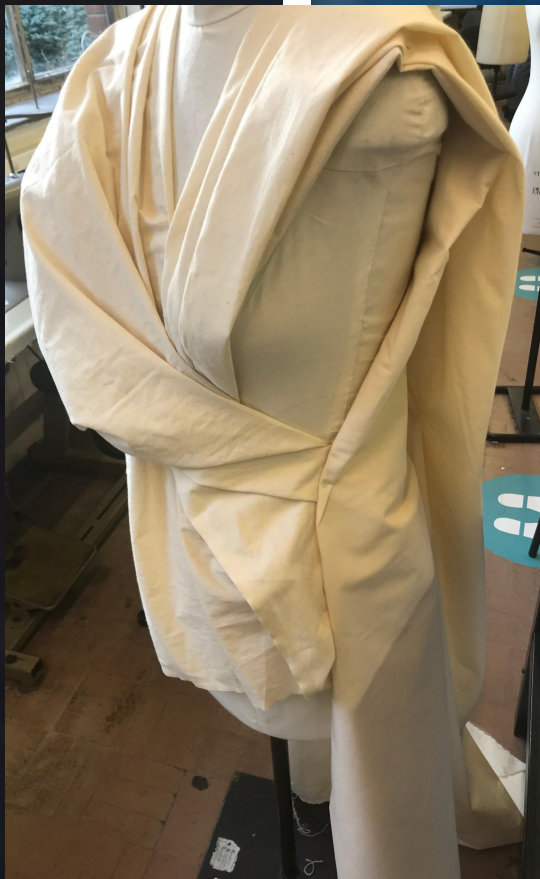
# Initial design ideas



# Draping development



Front



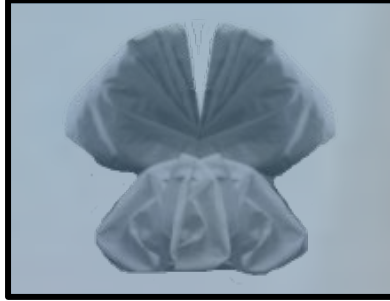
Side



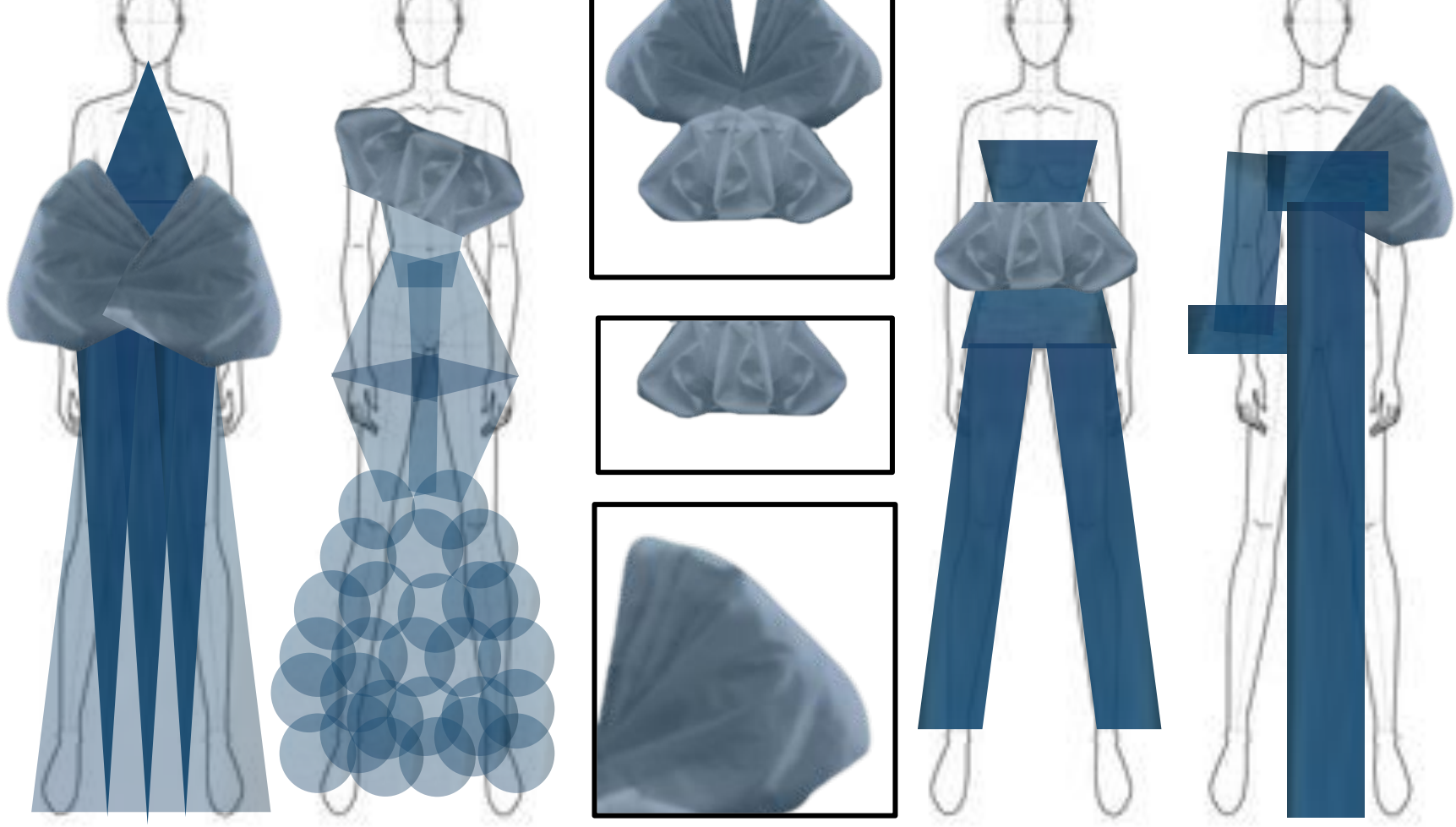
Back



# Design Development



# Outcomes





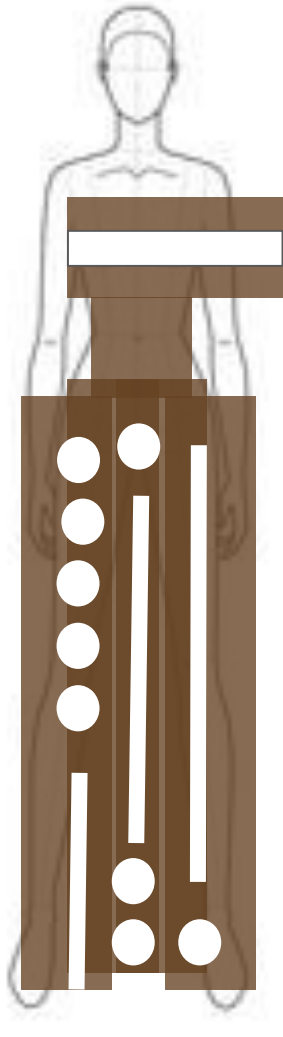


**Markings of the motherland**





# Initial design ideas



# Print idea/illustration



Not long after coming up with this project I decided to do some drawing while rewatch black panther, the film that originally inspired me. In doing so I stumbled upon the image seen on the left which was something that I had never drawn before so I decided to give it a try, after many failed attempts I finally managed to draw an outline that I was happy with. But by this time the film had got to my favorite scene where Erik Killmonger (the villain) takes off his shirt to show these circular markings that he has got from every he had ever done. Due to the large amount of kills that he has done these circular markings cover that majority of his upper body forming a beautiful pattern, this was something that inspired me to incorporate these circles as well as some lines to create my own tribal pattern that can be seen in the second image shown above. I then took this image, removed the background and played around with the transparency to create the dress you see on the right where





# Draping



For this project when it came to experimenting with shapes and silhouettes, I wanted to create shapes that would be able to beautifully showcase traditional african tribal marks. When creating the draping seen on this

page I did not have clear I idea of what I trying to do but I knew I wanted to create shapes that were quite simplistic and minimal to allow the tribal marks to shine.





# Beauty in the cracks





# MOOD BOARD



## Initial design ideas

For this project I decided to look at kintsugi a old japanese method of mending delicate things such as a porcelain tea cup or plates by filling in the cracks with liquid gold which is something that in turn would make the item a lot more valuable. This is something that I linked to mental health as people who commonly suffer from mental health conditions such as depression are often seen as someone that is broken. Kintsugi is something that I see as quite beautiful and think mental health is something that can be seen in same way, as person that is seen or see themselves as 'broken' has the unique ability to put themselves back together in new ways that were even more beautiful than before. So for my designs I wanted to create outfits that would all detachable parts on the upper half of the outfit to resemble an armour that would protect them from all of the negative connotations and misconceptions that people have about mental health.







# Draping



# Draping development







**Design development**

