

VASILEIOS  
KALAMIDAS

**KENZO**  
P A R I S

//NEW\_SCUBA



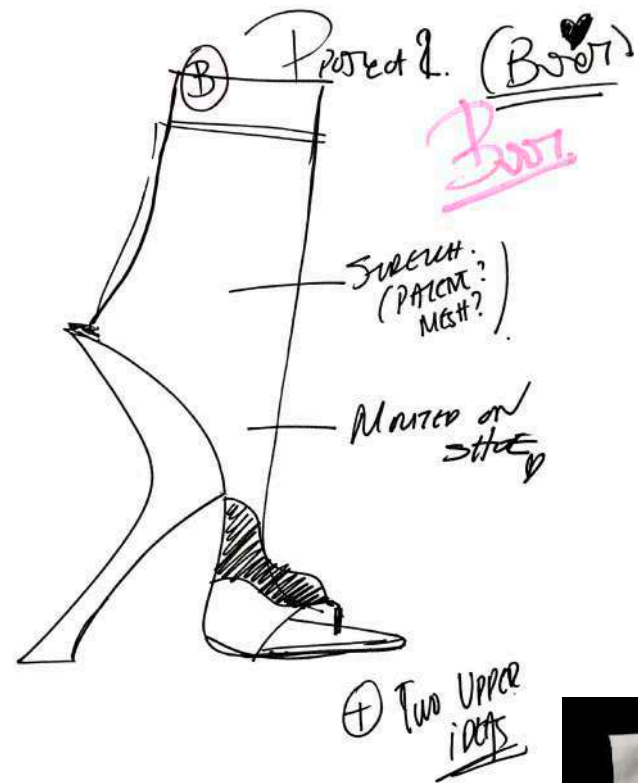


// SCUBA SHOES INSPIRATION



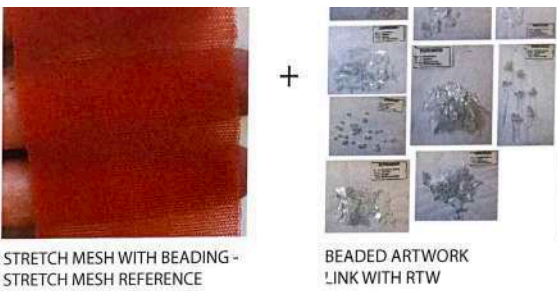


// SCUBA SOCK + JAPANESE THONG

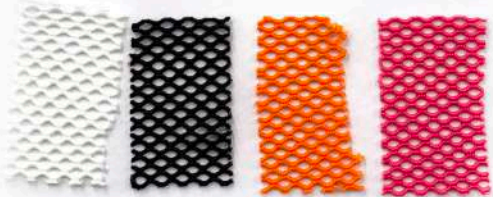




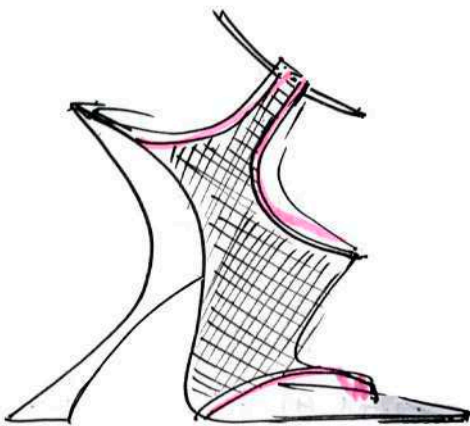
// SCUBA SANDALS



B STRETCH PERFORATED MESH

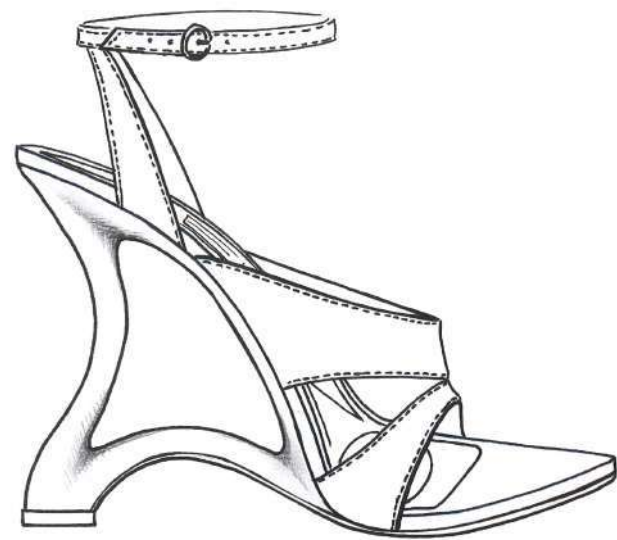
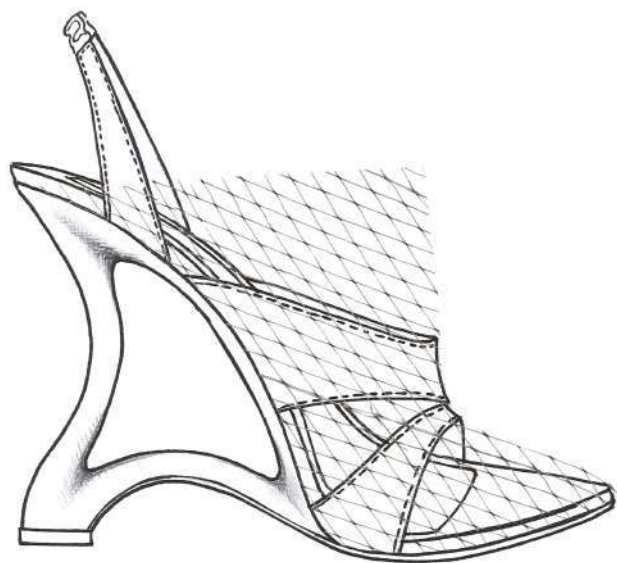


PROTECTOR  
STRETCH MESH  
THONG  
HONG SHOE





// TRANSPARENT NET



TRANSPARENT NET



SPECCHIO



PEARLISED



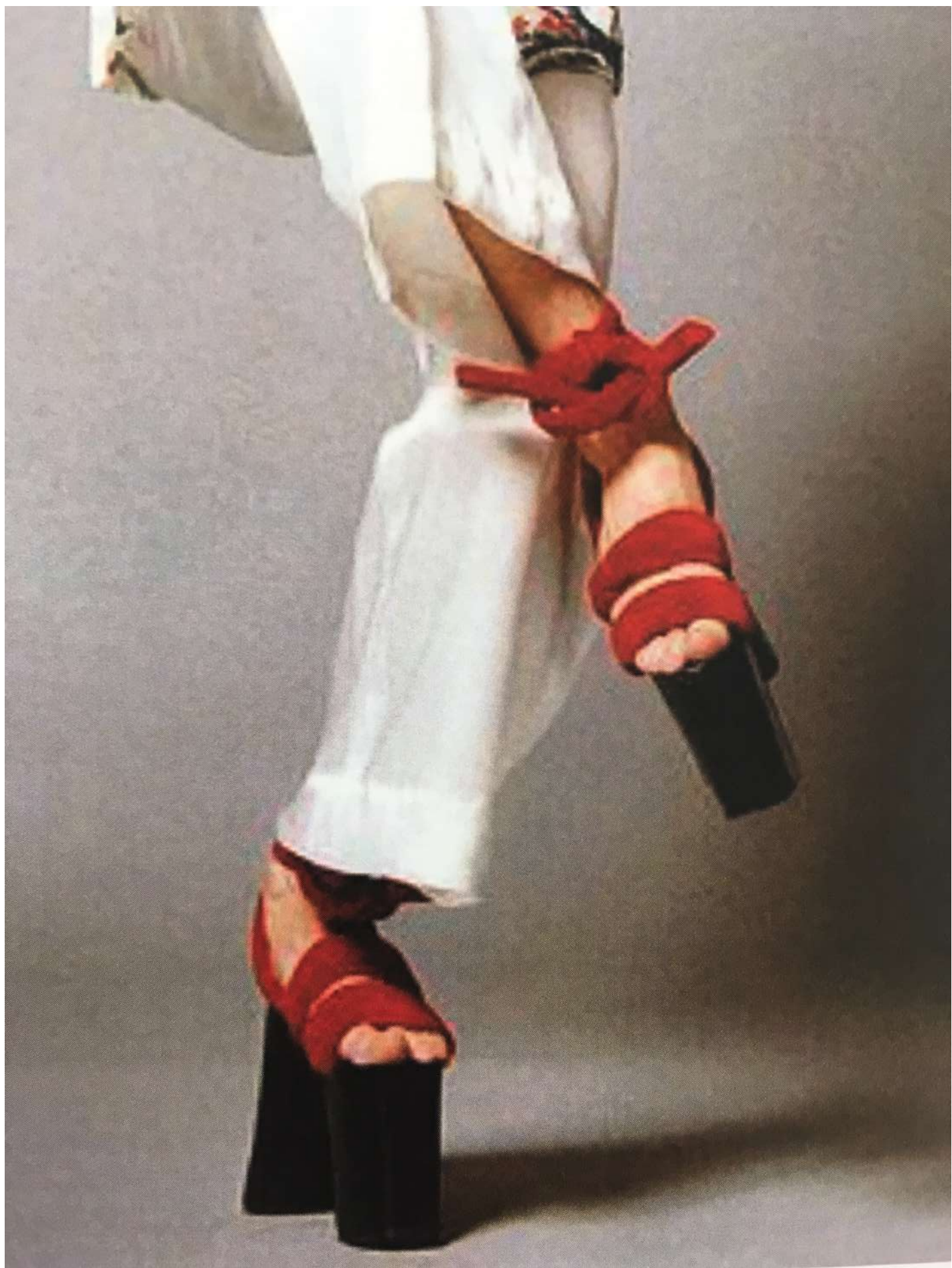
SPAZOLATTO



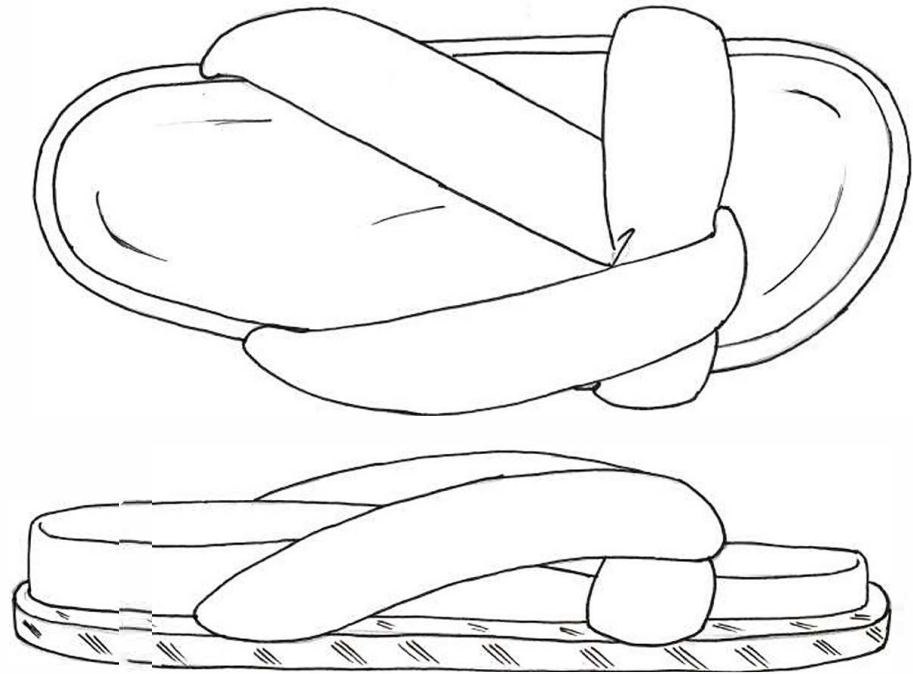


// OKOBO SANDALS









// PROTOTYPES





// ROUND TOE





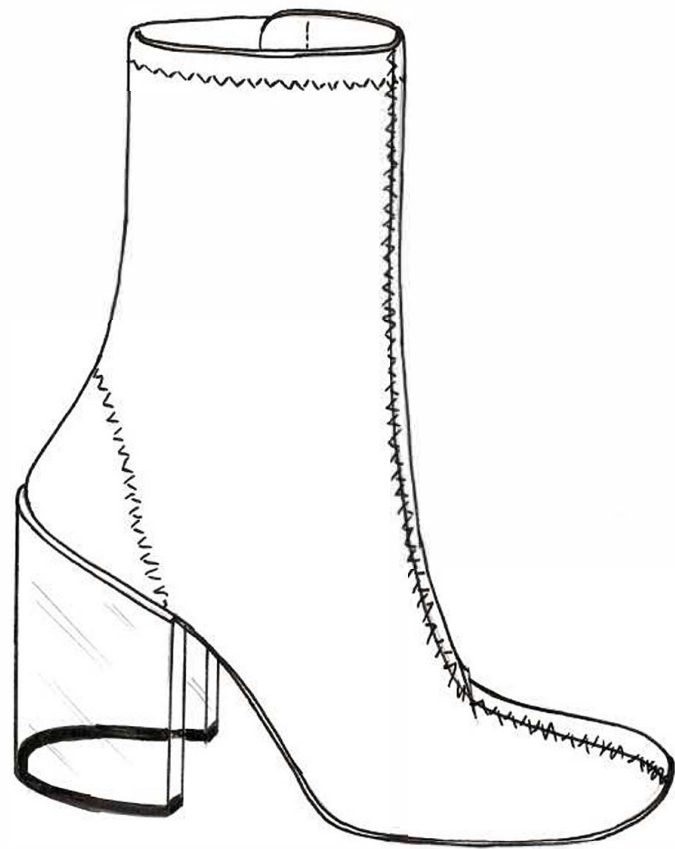


// REFERENCES





// PROTOTYPES





// SQUARE TOE



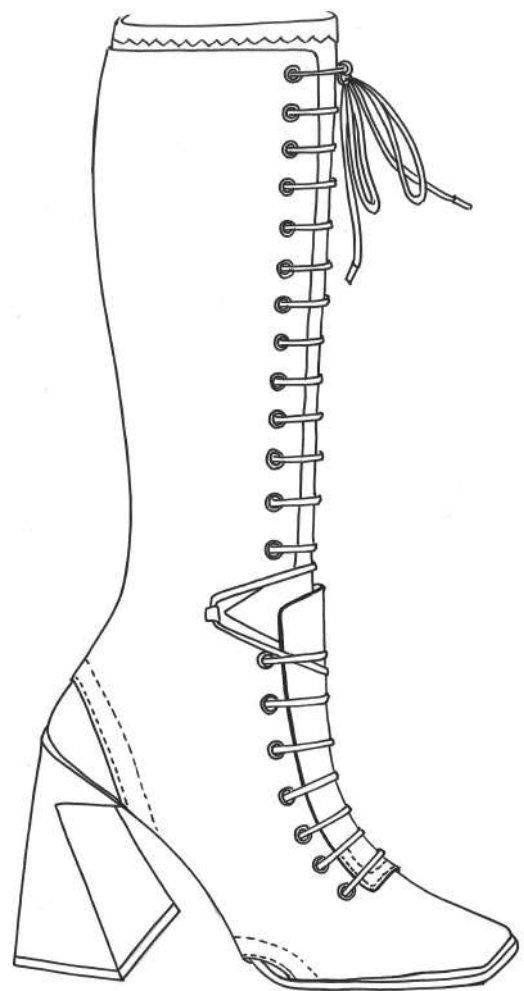














// CYCLING OVERSOCK INSPIRATION





Wollen rok, wollen trui  
en schoenen **Kenzo**,  
sokken **Christian Dior**



Short and trousers, with  
pink or applique and  
over, 2000, all KENZO





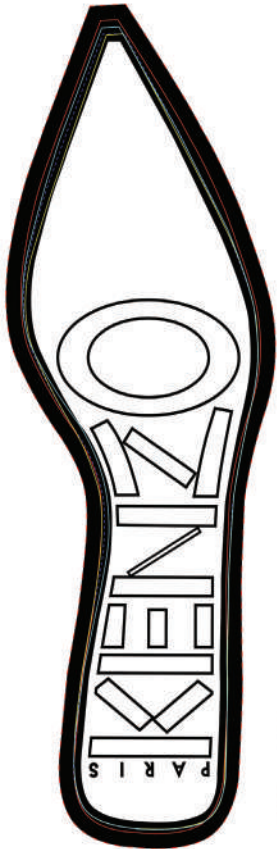


// LIMA





// LIMA DEVELOPMENT



F910  
F908 + 5 mm



LIMA - HYBRID PUMPS

SPAZZOLATO



STYLE 1

SPAZZOLATO + SHEARLING/PVC



SPAZZOLATO + MONGOLIA

STYLE 2





**ISABEL MARANT**







**ISABEL MARANT**









WOMENS - METAL HARDWARE



WOMENS - FRINGE WOVEN



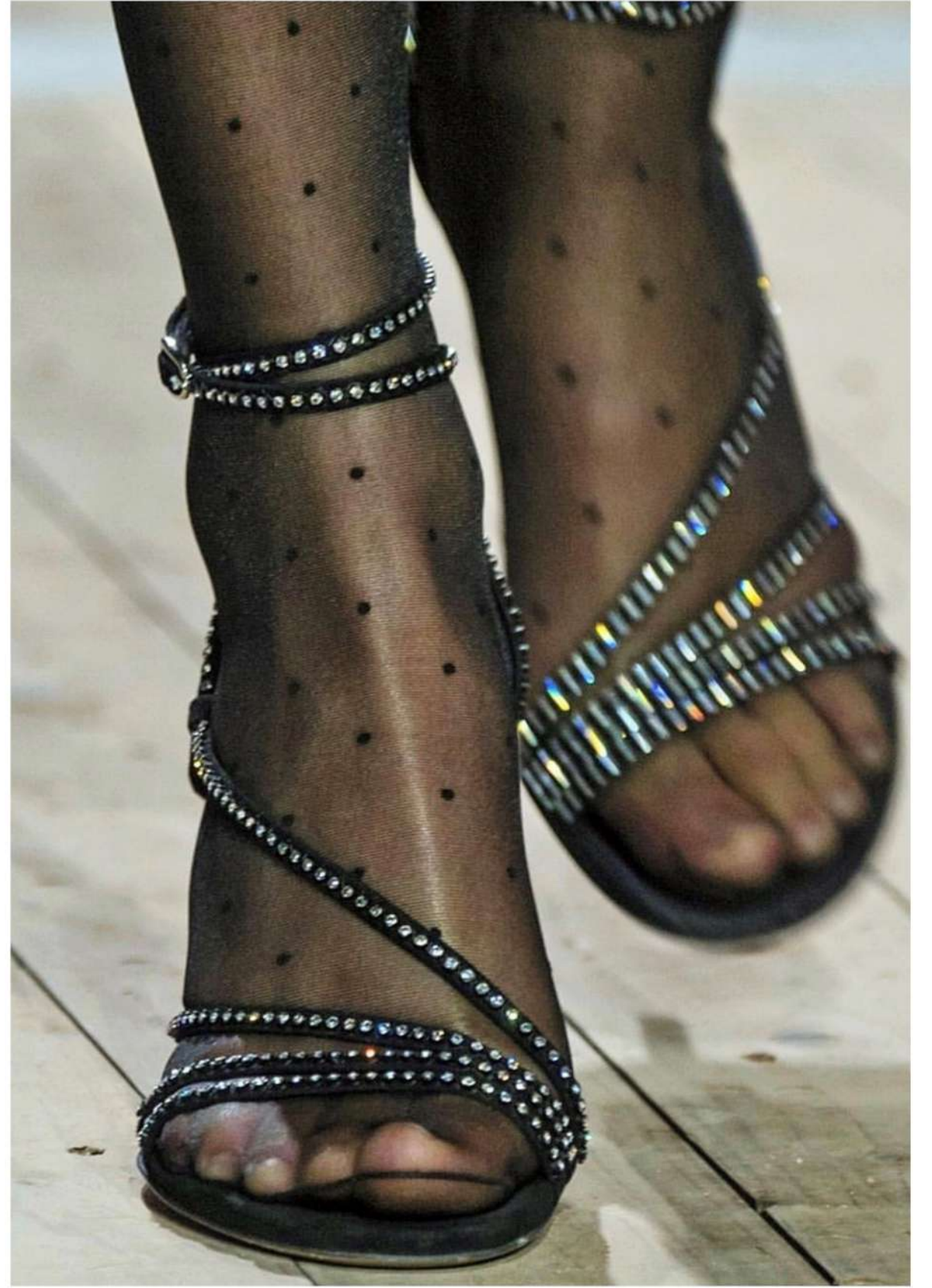
MENS



// DEVELOPMENT





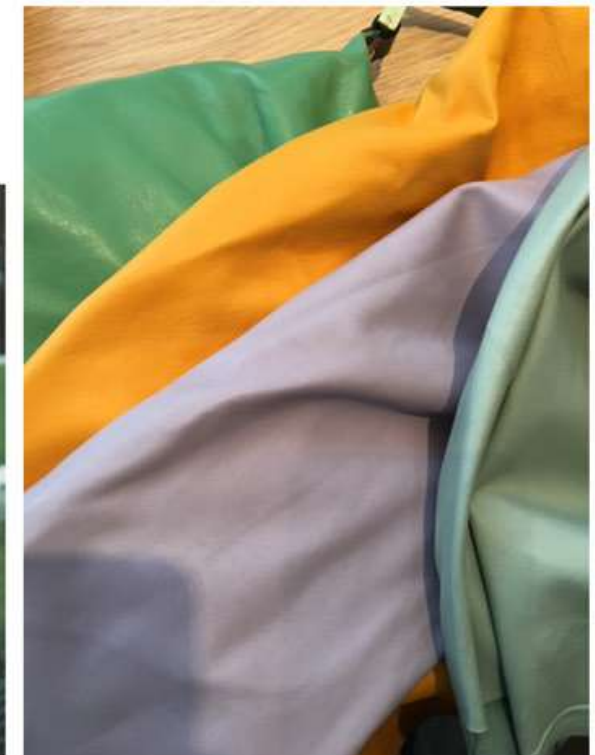








THE GLOVE BOOTS // SOFT BALLERINA CONSTRUCTION





**BURBERRY**

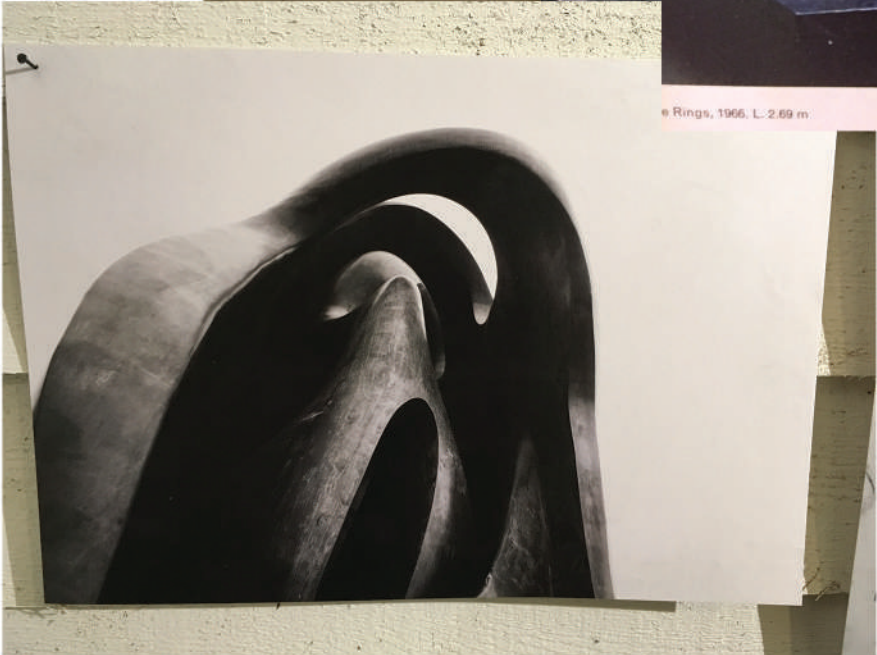
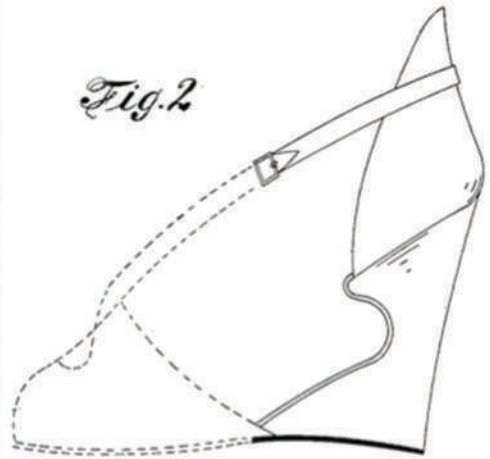
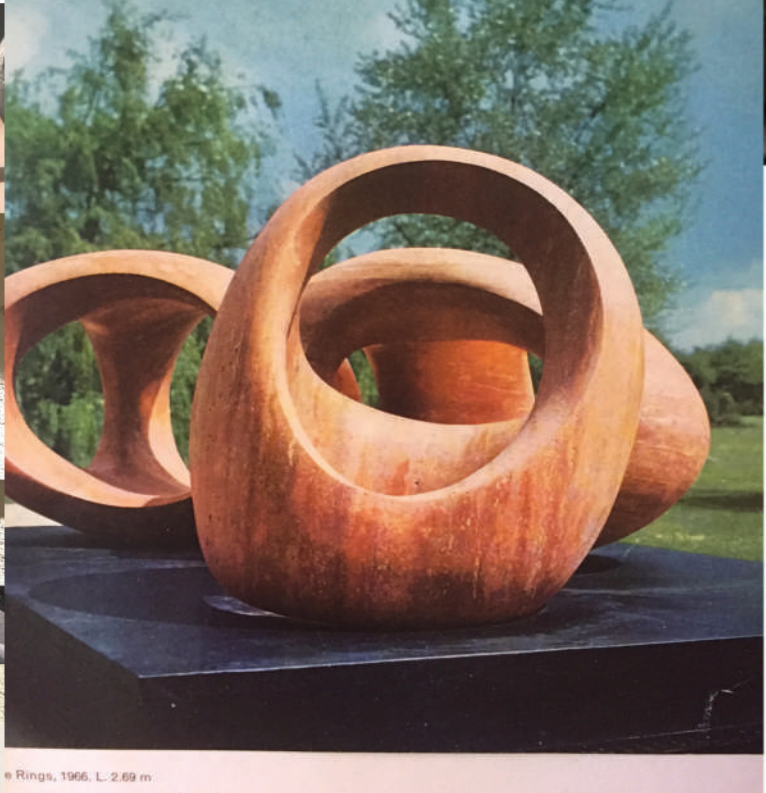
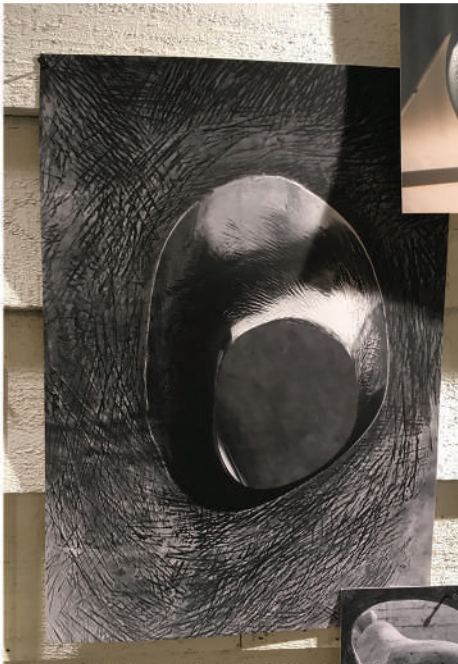
*London, England*



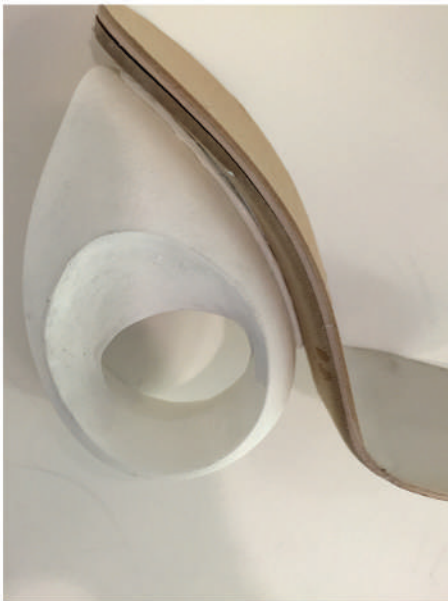
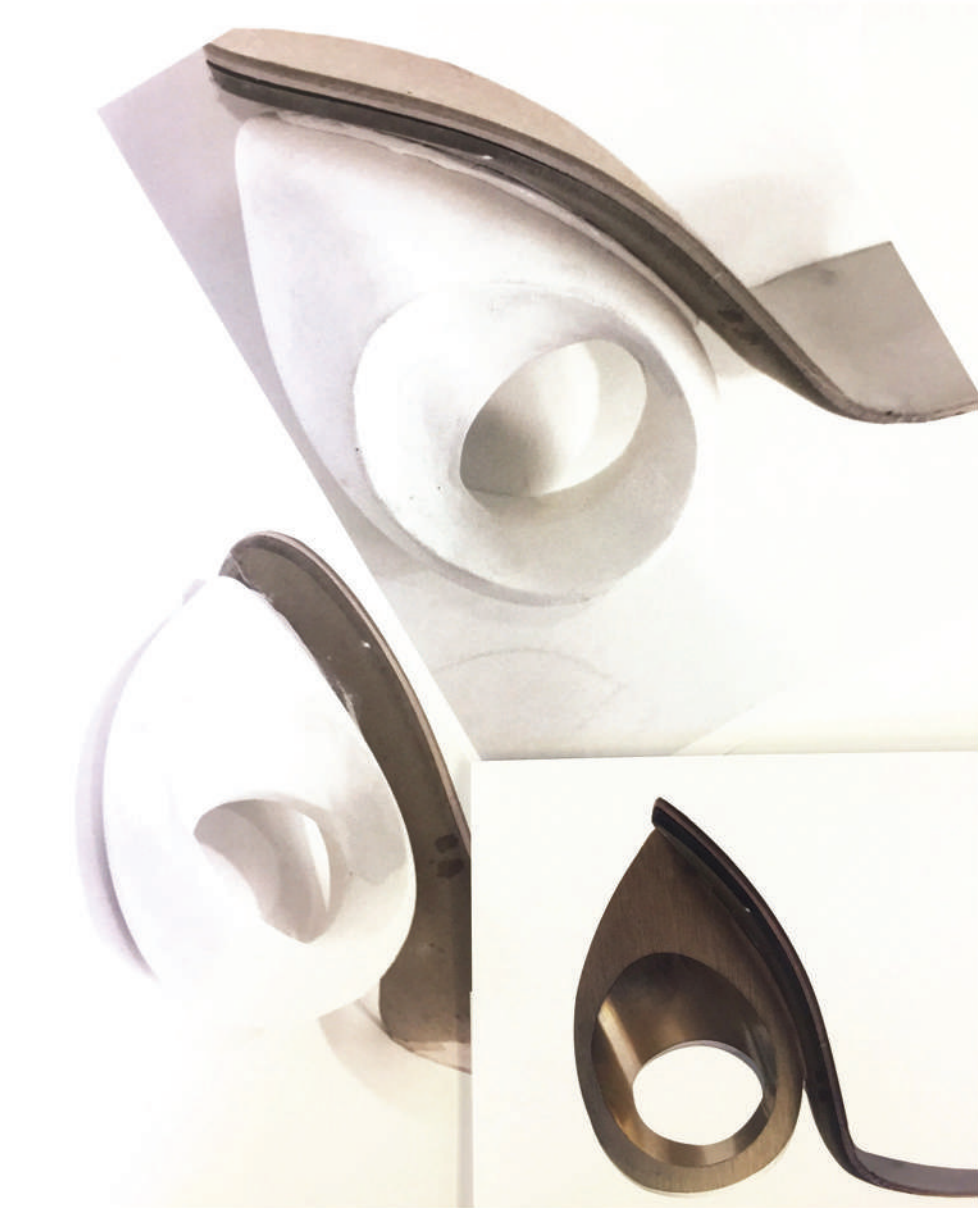




INSPIRATION // HENRY MOORE-SCULPTURAL HEEL









// SANDALS





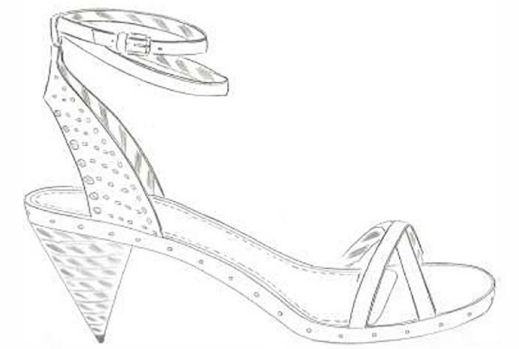








// TARTAN





ARESSET<sup>PARIS</sup>





ARESSET

















**RING \_011 / Silver + Lab Grown Diamond**

2mm RB D-F VS 0.03ct



**RING \_011 / Vermeil + Lab Grown Diamond**

2mm RB D-F VS 0.03ct



**EARRINGS \_019 / Silver + Lab Grown Diamonds**

2mm RB D-F VS 0.03ct. Total: 0.06ct



**EARRINGS \_019 / Vermeil + Lab Grown Diamonds**

2mm RB D-F VS 0.03ct. Total: 0.06ct

\* ROUND BRILLIANT CUT LAB GROWN DIAMONDS

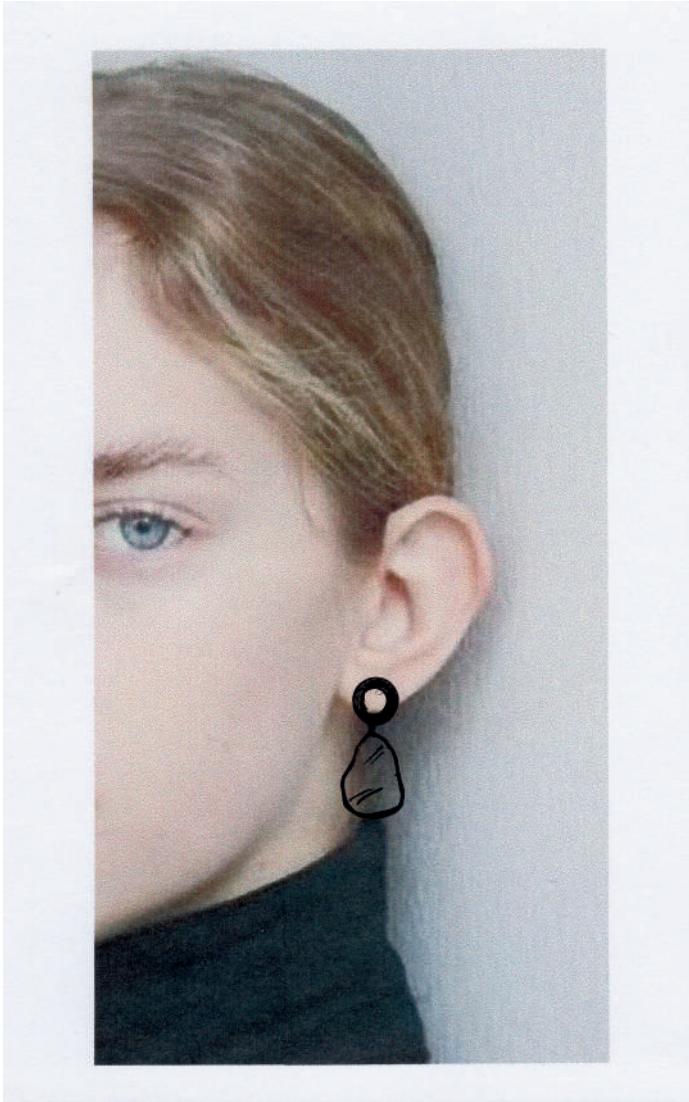




EARRINGS \_022 / Yellow Gold +  
South Sea Baroque Pearls



/ DEVELOPMENT



3D PRINTING / PROTOTYPING

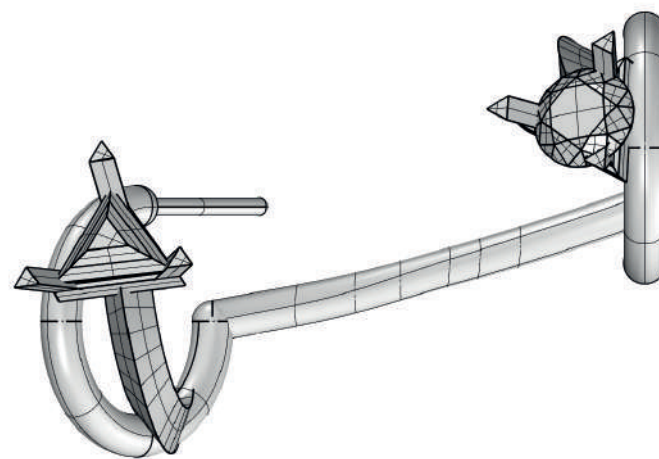
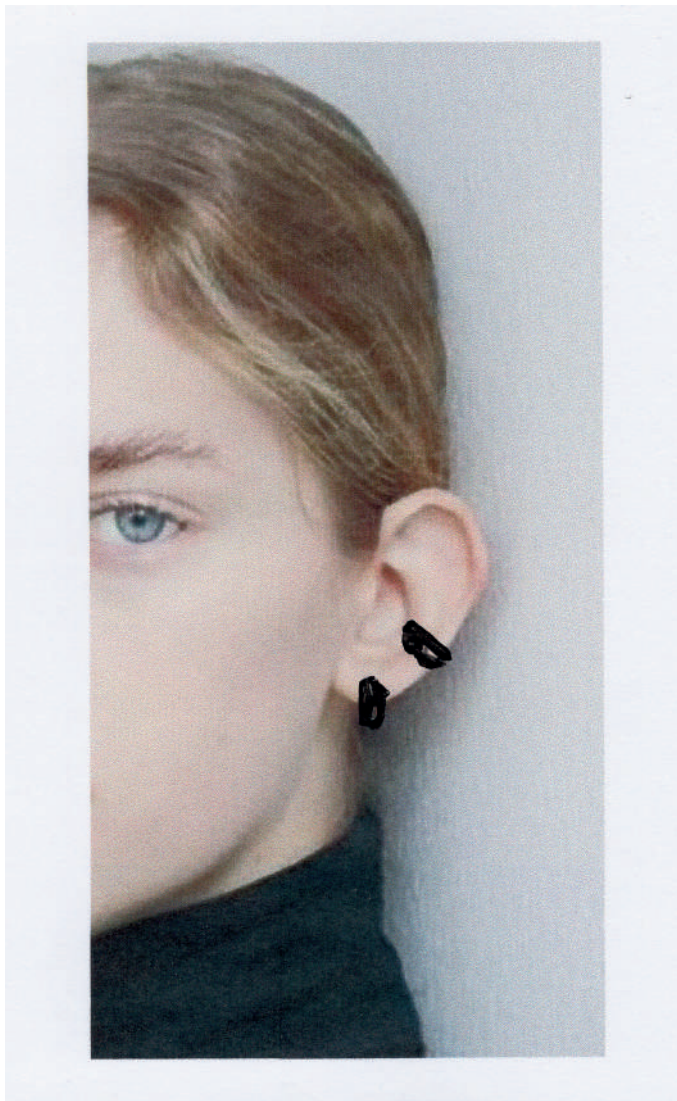








/ DEVELOPMENT



3D PRINTING / PROTOTYPING







**EARRING \_09 / White Gold +  
Lab Grown Gemstones**

5mm RB 0.45ct LG Emerald  
5mm TS 0.45ct LG Pink Sapphire



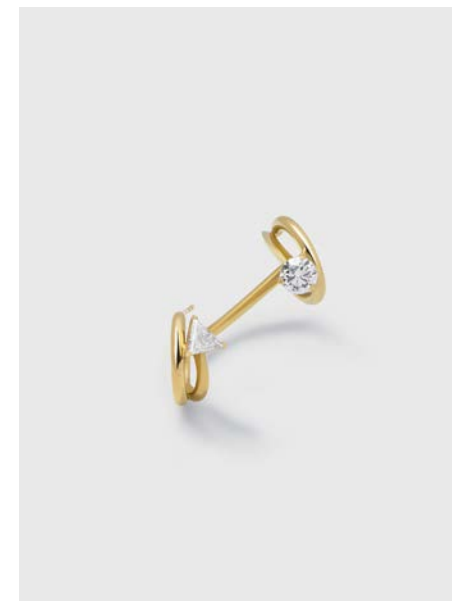
**EARRING \_09 / Yellow Gold +  
Lab Grown Gemstones**

5mm RB 0.70ct LG Yellow Sapphire  
5mm TS 0.42ct LG Alexandrite



**EARRING \_09 / White Gold +  
Lab Grown Diamonds**

5mm RB D-F VS 0.51ct  
5mm TS D-F VS 0.31ct



**EARRING \_09 / Yellow Gold +  
Lab Grown Diamonds**

5mm RB D-F VS 0.51ct  
5mm TS D-F VS 0.31ct

\* ROUND BRILLIANT CUT + TRIANGLE STEP-CUT LAB GROWN DIAMONDS OR GEMSTONES







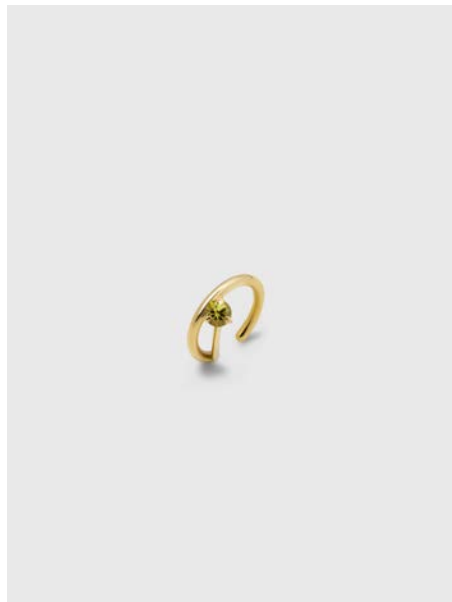






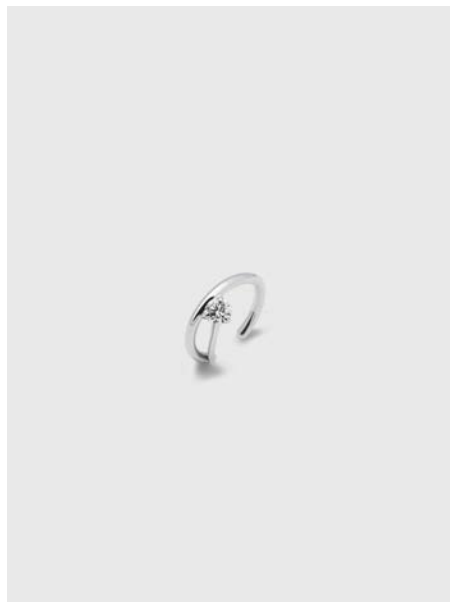
**CUFF EAR-LIP\_06 /White Gold  
+ Lab Grown Emerald**

3.0mm RB 0.10ct



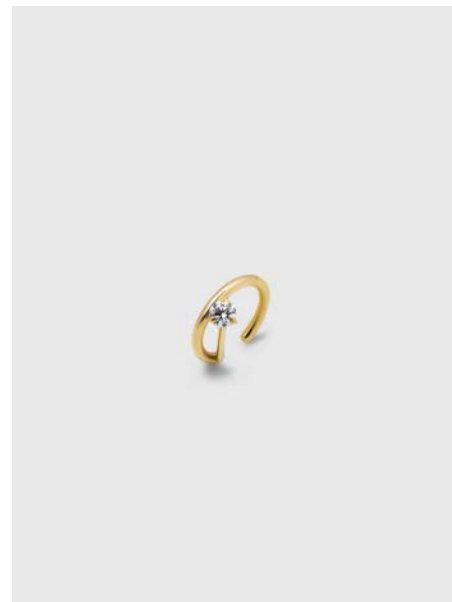
**CUFF EAR-LIP\_06 /Yellow Gold  
+ Lab Grown Yellow Sapphire**

3.0mm RB 0.10ct



**CUFF EAR-LIP\_06 /White Gold  
+Lab Grown Diamond**

3.1mm RB D-F VS 0.11ct



**CUFF EAR-LIP\_06 /Yellow Gold  
+ Lab Grown Diamond**

3.1mm RB D-F VS 0.11ct

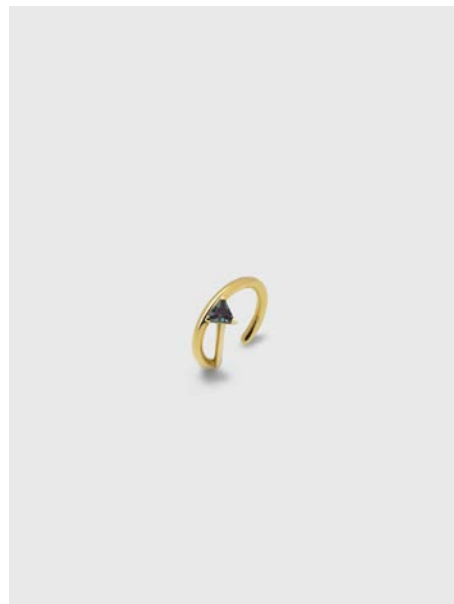
\* ROUND BRILLIANT CUT LAB GROWN DIAMONDS OR GEMSTONES





CUFF EAR-LIP\_05 /White Gold  
+ Lab Grown Pink Sapphire

3.0mm TS 0.10ct



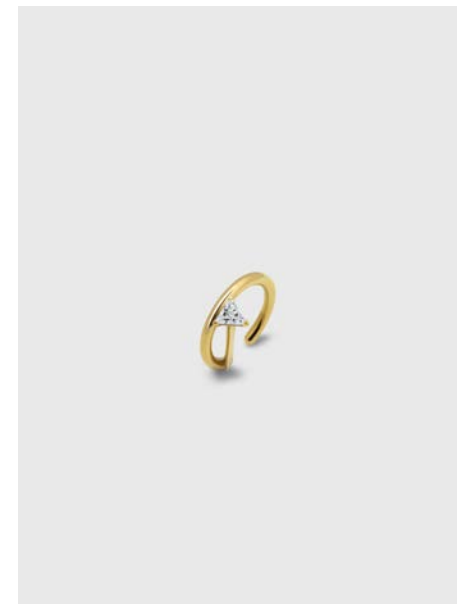
CUFF EAR-LIP\_05 /Yellow Gold  
+ Lab Grown Alexandrite

3.0mm TS 0.09ct



CUFF EAR-LIP\_05 /White Gold  
+Lab Grown Diamond

3.1mm TS D-F VS 0.09ct



CUFF EAR-LIP\_05 /Yellow Gold  
+ Lab Grown Diamond

3.1mm TS D-F VS 0.09ct

\* TRIANGLE STEP-CUT LAB GROWN DIAMONDS OR GEMSTONES



/ PACKAGING

