

VITO DELL'ERBA

Women

With a background of valuable experiences In North America, Europe and Asia. Working closely in senior positions ,with iconic creative directors from international luxury fashion brands such as Givenchy, Costume National, Miu Miu, and Helmut Lang.

Collaborated with the most influential professionals in fashion, I've gained a priceless experience in building strong ,unique, brand identity, through design , product development, fabric research ,marketing , and retail experience, working multi ethnic and gender teams, bringing out everyone's best potential.

I offer a complete service in the luxury segment from design research, fabric research and design, collection structure, product development to production fitting and definition. Together with my team, was personally responsible for most Helmut lang iconic styles, from denims , formal wear to all outerwear styles and dresses.

I believe each company has their own specific heritage, background, organization and goals. Not one is alike. Each brand must be confronted differently. Being innovative collections, or classical ones.

VITO DELL'ERBA

HELMUT LANG

PRODUCT MANAGER/ DESIGN CO-ORDINATOR

C'N'C
CoSTUME NATIONAL

HEAD OF DESIGN

CoSTUME NATIONAL

HEAD OF DESIGN

NYNPHA

HEAD OF DESIGN

VITO DELL'ERBA

OWNER



HEL MUT LANG

HELMUT LANG S/S 2004



HELMUT LANG S/S 2003



HELMUT LANG A/W 2003



HELMUT LANG S/S 2001



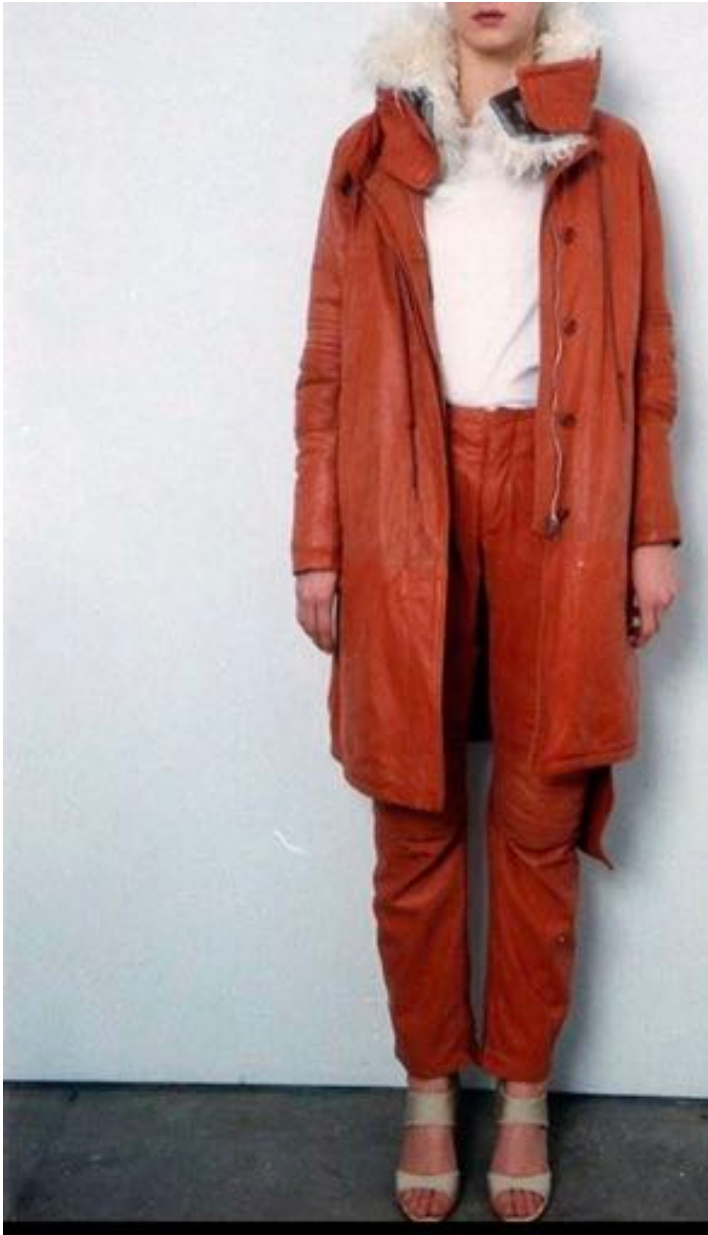
HELMUT LANG OUTERWEAR



HELMUT LANG OUTERWEAR



HELMUT LANG OUTERWEAR



HELMUT LANG OUTERWEAR





HW5252

hooded parka fur lining



HW5253

hooded caban fur lining



HW5249

hooded parka piping detail padded lining



HW5257

hooded caban piping detail padded lining



HW5256

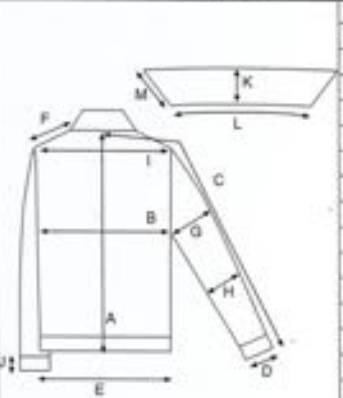

knit hooded parka curved yoke padded lining



HW5254

knit funnelneck parka curved yoke padded lining

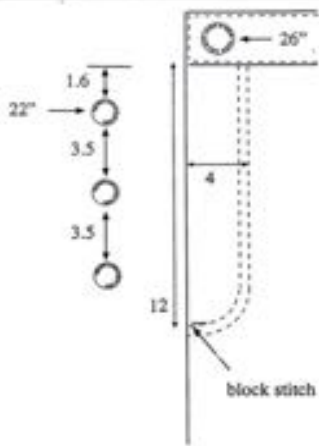
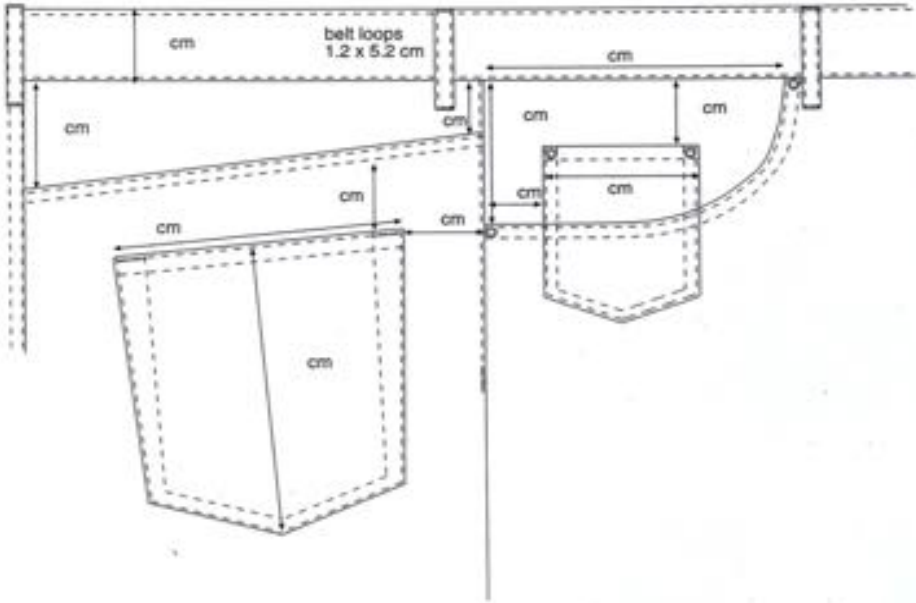
HELMUT LANG DENIM

HELMUT LANG AW 02/03 WOMAN				date:		style no.: HW5004																																					
product:		cat.: Denim		up date:		prev. style no.: HW5004																																					
				<table border="1"><tr><td>size</td><td>28.07.</td></tr><tr><td>A</td><td>55.5</td></tr><tr><td>B</td><td>49</td></tr><tr><td>C</td><td>83</td></tr><tr><td>D</td><td>12</td></tr><tr><td>E</td><td>46</td></tr><tr><td>F</td><td>12.5</td></tr><tr><td>G</td><td>16.5</td></tr><tr><td>H</td><td>14</td></tr><tr><td>I</td><td>41</td></tr><tr><td>J</td><td>15</td></tr><tr><td>K</td><td>7.2</td></tr><tr><td>L</td><td>42</td></tr><tr><td>M</td><td>8</td></tr><tr><td>N</td><td></td></tr><tr><td>O</td><td></td></tr><tr><td>P</td><td></td></tr><tr><td>Q</td><td></td></tr></table>				size	28.07.	A	55.5	B	49	C	83	D	12	E	46	F	12.5	G	16.5	H	14	I	41	J	15	K	7.2	L	42	M	8	N		O		P		Q	
size	28.07.																																										
A	55.5																																										
B	49																																										
C	83																																										
D	12																																										
E	46																																										
F	12.5																																										
G	16.5																																										
H	14																																										
I	41																																										
J	15																																										
K	7.2																																										
L	42																																										
M	8																																										
N																																											
O																																											
P																																											
Q																																											
<table border="1"><thead><tr><th></th><th>fabric 1</th><th>fabric 2</th><th>lining</th><th>req'd</th><th>rev'd</th></tr></thead><tbody><tr><td>1. proto type</td><td></td><td></td><td></td><td></td><td></td></tr><tr><td>2. proto type</td><td></td><td></td><td></td><td></td><td></td></tr><tr><td>3. proto type</td><td></td><td></td><td></td><td></td><td></td></tr></tbody></table>					fabric 1	fabric 2	lining	req'd	rev'd	1. proto type						2. proto type						3. proto type						 35,5 cm															
	fabric 1	fabric 2	lining	req'd	rev'd																																						
1. proto type																																											
2. proto type																																											
3. proto type																																											
prototypes commentary:				style commentary: - base as S/S 02 - keep details and finishing																																							



HELMUT LANG DENIM

HELMUT LANG AW 02/03 WOMAN		size	style no.
producer	cat. Denim	up size	print style no.
			HR5021



HELMUT LANG DENIM



HELMUT LANG KNIT



HELMUT LANG PRINTS



HELMUT LANG TROUSERS

HELMUT LANG AW 02/03 WOMAN

date:

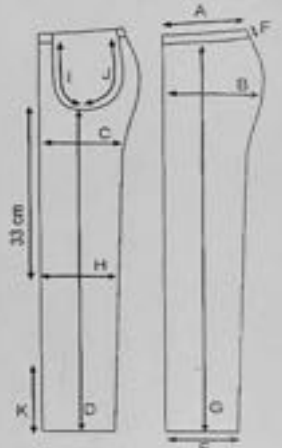
style no. HR 5035

producer:

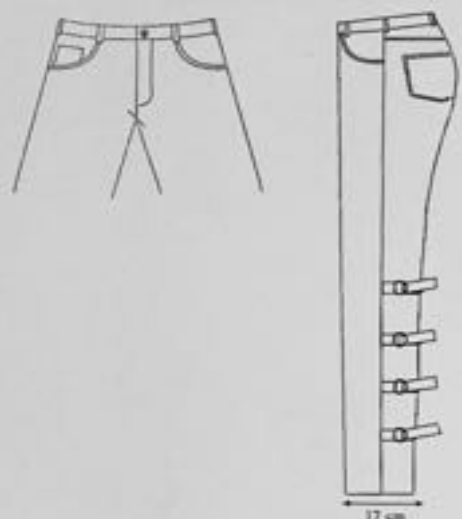
ref. Denim

up date:

prev. style no. HDE202



size	28-32
A	39.5
B	48.5
C	29.5
D	84
E	17
F	3.6
G	
H	20.5
I	18
J	27.5
K	
L	
M	
N	
O	
P	
Q	



	fabric 1	fabric 2	lining	req'd	rev'd
1. proto type	SUPRA KHOL			06.12.	
2. proto type					
3. proto type					

prototypes commentary:

06.12.01

- volume seems ok, please see attached sheet with the measures of the sample you took in NY

- please check back crotch and the back thigh. it seems that the back thigh is twisting a bit?

back details:

please go with measures of attached sheet

we have to find out if we are using same fabric or ribbons for the straps back please send heavier ribbons, and try to stitch 2 medium weight ribbons together, send straps in same fabric etc.

style commentary:

- use body base of HR5624 from s/s2002

- keep details and finishing

strap system:

- with buckle/ strap system on both legs/ back

- nickel colored D- rings

- straps = heavy cotton canvas or twill ribbons, 2.5 cm height, always matching color

- for details see attached sheet

- please send different samples of ribbon qualities

HELMUT LANG AW 03/04 WOMAN

date:

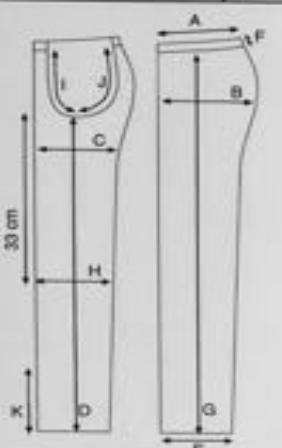
style no. HR5051

producer:

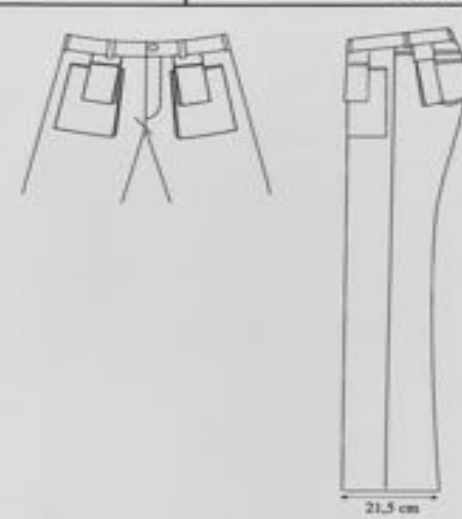
ref. Denim

up date:

prev. style no. DEN 2



size	
A	
B	
C	
D	
E	
F	
G	
H	
I	
J	
K	
L	
M	
N	
O	
P	
Q	



	fabric 1	fabric 2	lining	req'd	rev'd
1. proto type					
2. proto type					
3. proto type					

prototypes commentary:

style commentary:

see pictures for modifications

low waist contour boot cut stacked pockets

HELMUT LANG FITTINGS





CoSTUME NATIONAL

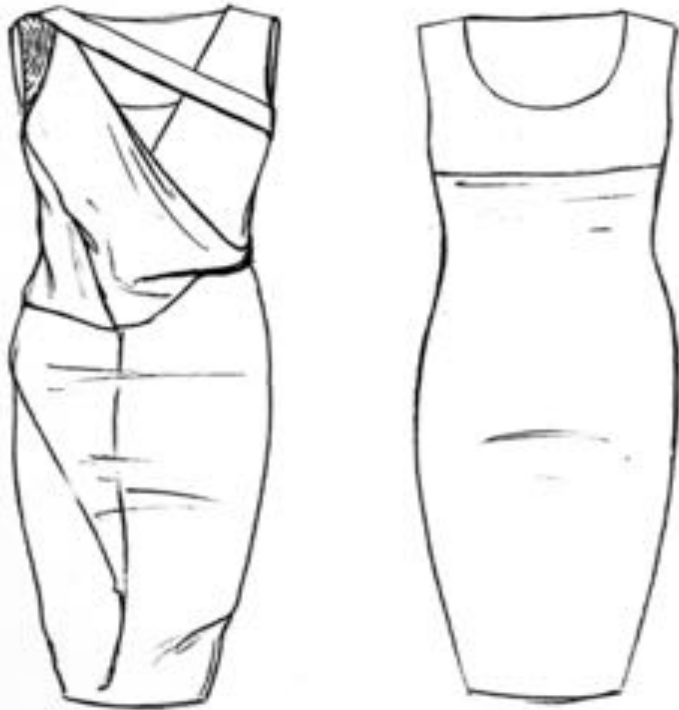
Costume National A/W 2007



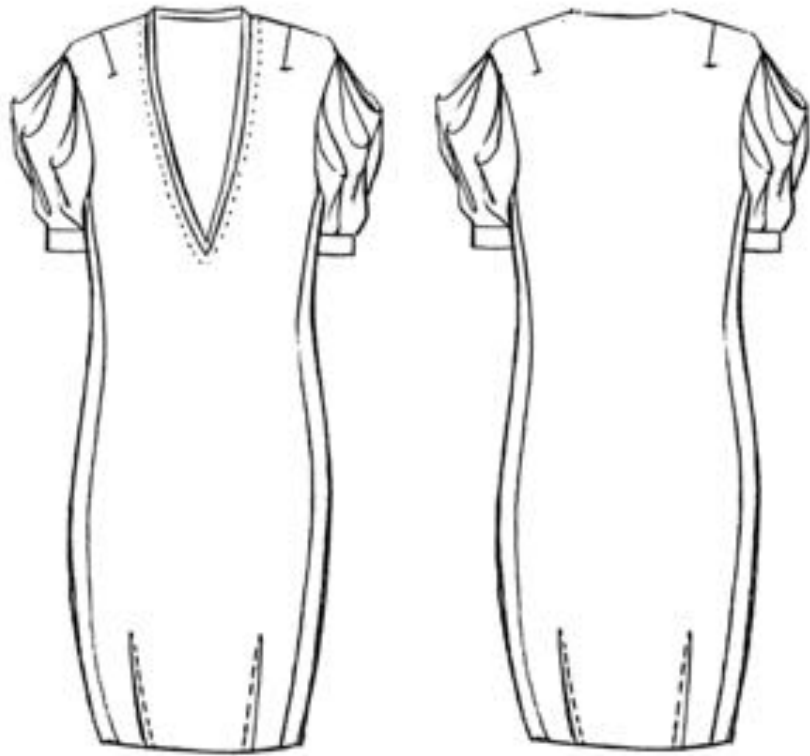
Costume National A/W 2007



62V856



62V867



Costume National S/S 2008



Costume National S/S 2007



Costume National S/S 2007



























NYNPHA



DIGITAL PRINT



DIGITAL PRINT





NYNPHA Autumn/ Winter 2011



NYNPHA Spring / Summer 2010



NYNPHA Spring / Summer 2010

DIGITAL PRINT



File: Greece_front.jpg



File: Greece_back.jpg



NYNPHA Spring / Summer 2010

DIGITAL PRINT



NYNPHA Spring / Summer 2010

NYNPHA
COLLECTION S/S 2011
DENIM
DRAPED DENIM



front



back



NYNPHA Spring / Summer 2010

BLACK DENIM



WHITE DENIM



SLIM BOOT



CLASSIC DENIM



VINTAGE CLASSIC DENIM



CLASSIC DENIM



GOLD BOOT



SHORT PANTS



EDITORIALS



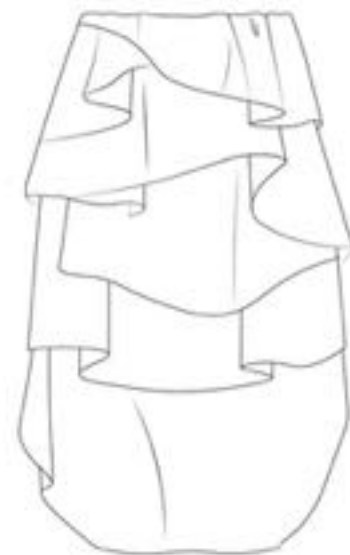
EDITORIALS







VITO DELL'ERBA
SS19DR-GOR-1505





VITO DELL'ERBA
SS19TO-COR-3500





VITO DELL'ERBA
SS19DR-COR-1509





VITO DELL'ERBA

AUTUMN/WINTER AW20



Pink

05



Powder Blue

06



Magenta

07



Gold

09



Berry

11

Style Code - AW20DR-SAS-1529

Description - Winged Flared Dress

Fabric Body - 100% Satin Silk



VITO DELL'ERBA
SS19DR-COR-1507



VITO DELL'ERBA

AUTUMN/WINTER AW20



White Dots on Black

03



Black Dots on White

04

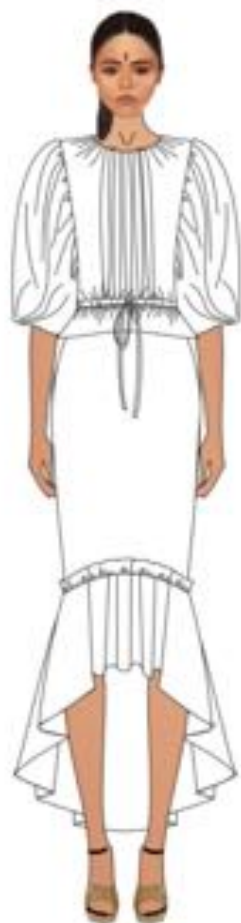
Style Code - AW20DR-SAP-1522

Description - Single Sleeve Wing Dress

Fabric Body - 100% Silk Satin

VITO DELL'ERBA

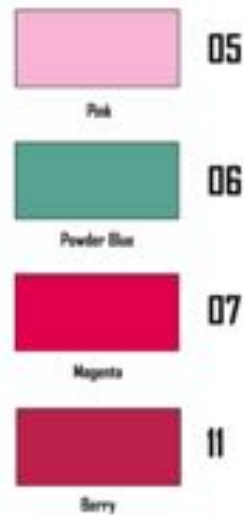
AUTUMN/WINTER AW20



Style Code - AW20DR-SAS-
Description - Gathered Merri
Fabric Body - 100% Silk Sat

VITO DELL'ERBA

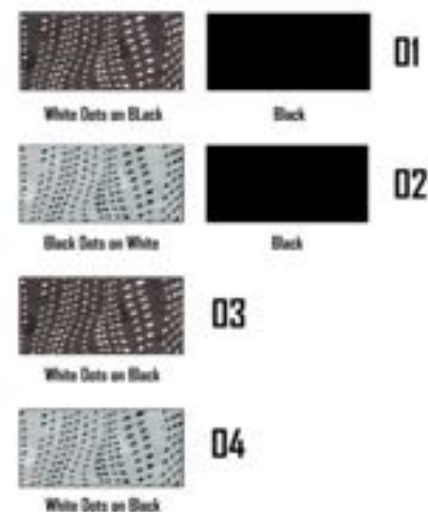
AUTUMN/WINTER AW20



Style Code - AW20DR-S
Description - Courtisan
Fabric Body - 100% Silk

VITO DELL'ERBA

AUTUMN/WINTER AW20



Style Code - AW20DR-SAP-1525
Description - Shawl Skirt Dress
Fabric Body - 100% Silk Satin





VITO DELL'ERBA



VITO DELL'ERBA

SPRING/SUMMER SS19



Black and Gold 51



Beige and Maroon 53

Style Code - SS19BL- HLS - 5500

Description - Shawl collar,
Gathered Sleeve Blazer

Fabric Body - 100% Silk Hand Loom

Sizes - Sizes XS / S / M / L

Minimal Order - 4 Units

Price - € 240.00



VITO DELL'ERBA

SPRING/SUMMER SS19



Ruby Red 05



Emerald Green 06



Peacock Purple 04



Charcoal Black 02

Style Code -

Description - Cortisan dress with detachable Corset

Body - 100% Silk Satin

Corset- 100% Silk Organza

Sizes - Sizes XS / S / M / L

Minimal Order -

Price -










VITO DELL'ERBA

AUTUMN/WINTER AW20



	21
Pink	
	22
Steel Blue	
	07
Magenta	
	09
Gold	
	11
Berry	

Style Code - AW20JS-SAS-5000

Description - Belted Wrap Jumpsuit

Fabric Body - 100% Silk Satin

Second Fabric - 100% Silk Georgette

EDITORIALS



EDITORIALS



EDITORIALS

